



Surgeon General's **WARNING**



Surgeon General's **WARNING**

Do not ever ever ever
promise something to
Chris Edmondson -
Yurkunan unless you

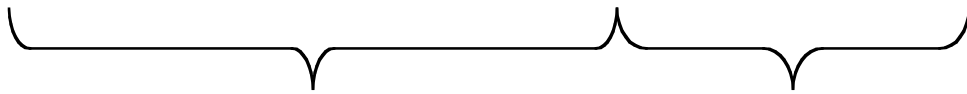
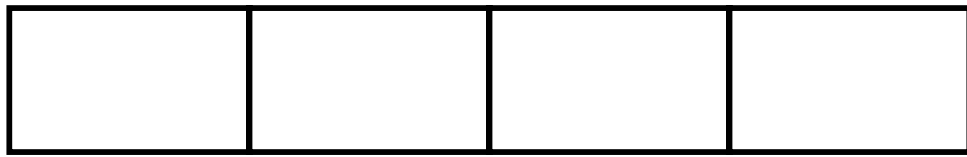
REALLY

mean it!

**A strategy to
enhance the
usefulness
of
IP Version 6**

John Wroclawski
MIT LCS

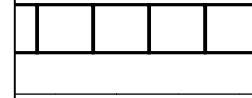
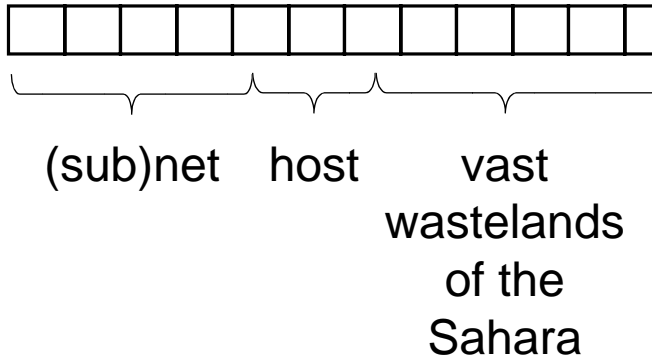
IPv4 Address



(sub)net

host

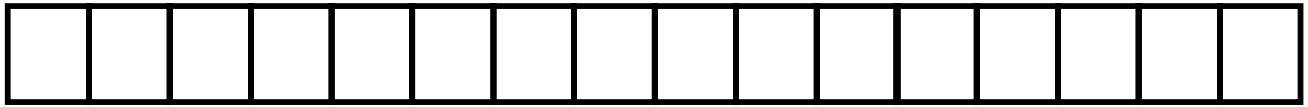
IPv6 Address



2 slides side by side - IPv6 address needs a little extra room!

Solution:

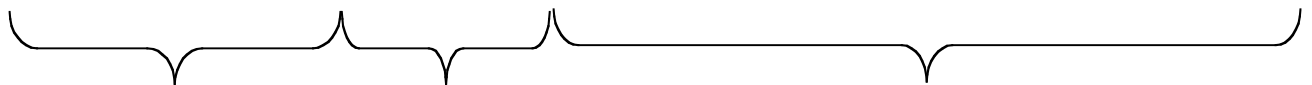
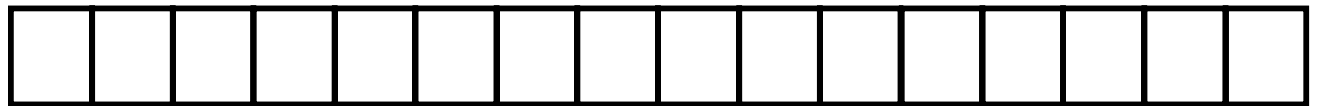
**carry the
application data
inside the
IPv6 address!**



(sub)net

host

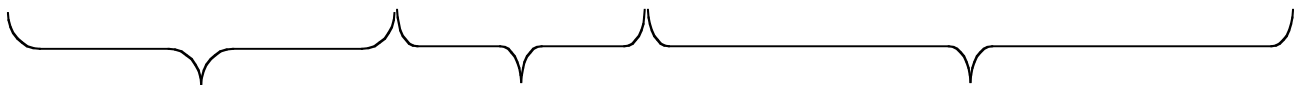
audio sample



(sub)net

host

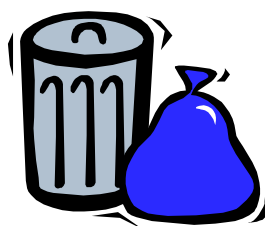
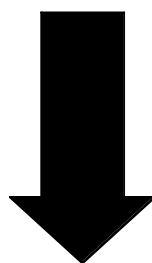
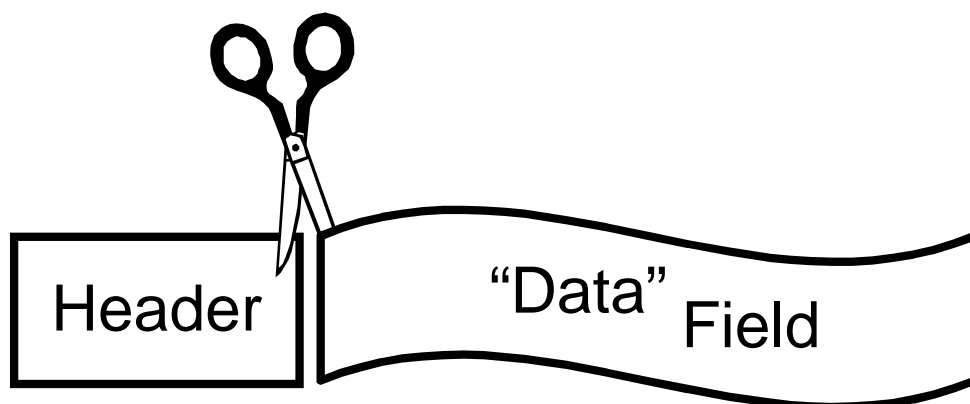
HTTP data



(sub)net

host

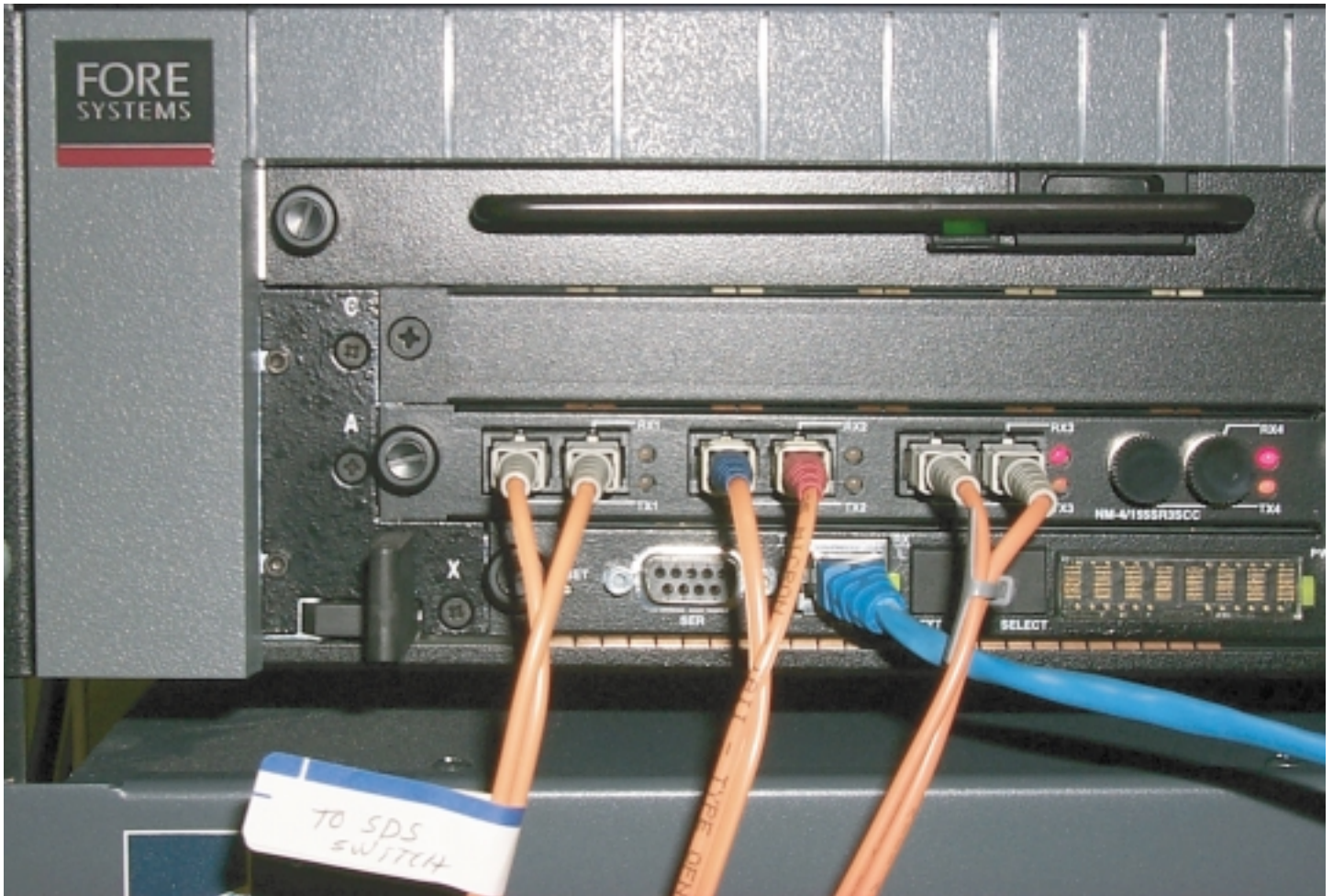
$\frac{1}{1e06}$ of .PPT file



- A Key Advantage:
Small, fixed-length packets!
 - Small:
 - Low latency capability
 - More precise scheduling
 - Fixed length:
 - Simple switch design
 - Simpler link scheduling algorithms
 - Easier buffering strategies



(A related technology?)



(Oops - sorry; wrong flavor...)

Dr. Stephen E. Deering



Father of ATM_(ng)